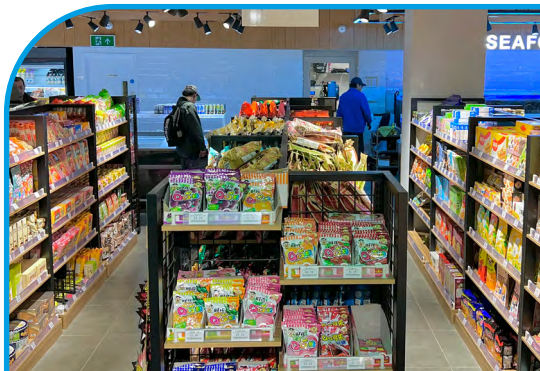




blue whale

BLUE WHALE ORIENTAL SUPERMARKET RETAIL PROPERTY REQUIREMENTS 2023/24



SIZE:

• **8,000 TO 10,000 SQ FT**

SPECIFICATION:

- **3 PHASE ELECTRIC**
- **WATER SUPPLY**
- **GAS SUPPLY**

From the team at Bon Pan Asian Restaurants, **Blue Whale Supermarket** opened their initial 5,500 sq ft store in Chinatown at St James Tower Manchester in 2021, selling a wide range of live seafood and fresh fish, Asian and Oriental food, snacks and condiments, alongside a 60-cover sushi restaurant concept, AKA Sushi.

We are now seeking further sites for Blue Whale in the following locations:

- Liverpool
- Leeds
- Sheffield
- Edinburgh
- Glasgow
- Bristol
- Birmingham

blue whale

Please send any opportunities to retained agents:

SAMUEL MAY

E samuel@mayandcompany.co.uk

D 020 3503 0635 M 07742 256 873

MAY COMPANY
RETAIL & LEISURE SPECIALISTS